

POWER WD 50 I



WET & DRY VACUUM CLEANERS

Wet/dry vacuum cleaner equipped with a powerful and high efficiency New Generation motor. Model equipped with the Ultra FilteRing System (UFS) that, thanks to its special polypropylene spacer ring, allows to keep the cartridge filter (M filtration class) always installed guaranteeing best suction performances and maximum motor protection (even in case of incorrect use by the operator). UFS is also a practical solution: the floating system is independent from the motor head and fixed directly to the ring, making cleaning and maintenance quick, simple and intuitive. Power WD 50 I is equipped with stainless steel container. Exhaust air filter. Great air flow rate and suction power. Driving frame in anti-shock plastic material with accessories holders. Paper filter bag, nylon filter, HEPA cartridge filter and TNT filter optional.



Ultra FilteRing System



PTFE cartridge filter (M filtration class)



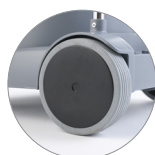
Stainless steel container sturdy and durable



Gangway tool (optional)



Front swivel castor wheels



Large diameter rear wheels



TNT filter (optional)

PRODUCT IDENTIFICATION

TYPE

POWER WD 50 I

REF. NO.

14594010001

PIECES/PALLET

8

TECHNICAL DATA

| | | |
|--------------------------------------|----------------|-------------|
| Voltage - Frequency | 220-240 V~ | 50/60 Hz |
| Max power rating | W | 1450 |
| Rated power (nominal power) | W | 1350 |
| Container capacity | l | 50 |
| Useful capacity | l | 35 |
| Useful dust bag capacity | l | 19 |
| Filtering surface (textile filter) | m ² | 0,35 |
| Filtering surface (cartridge filter) | m ² | 0,5 |
| Air flow rate | l/s | 74 |
| Vacuum | mbar | 260 |
| Sound level | db(A) | 62 |
| IP code | | IPX4 |
| Power supply cable | m | 10 |
| Weight (without accessories) | Kg | 15,3 |
| Dimensions | mm | 540x490x840 |

STANDARD ACCESSORIES

| TYPE | REF. NO. |
|--|----------|
| Flexible hose 2,5 m | 6010500 |
| Suction tube "S" | 2511600 |
| Dry floor tool | 6010000 |
| Squeegee tool | 6010011 |
| Round brush | 2511615 |
| Crevice tool | 2511610 |
| Textile filter | 6730000 |
| PTFE cartridge filter (M filtration class) | 2512741 |

OPTIONAL ACCESSORIES

| TYPE | REF. NO. |
|---|----------|
| PVC extension tube (0,5 m) | 2512000 |
| Antifoam device | 6200150 |
| Nylon filter (filtering surface 0,62 m ²) | 3001225 |
| Nylon protection filter | 3001016 |
| HEPA cartridge filter (filtering surface 0,5 m ²) | 2512760 |
| Paper filter bag with cap l 19 x 10 | 6830030 |
| Carpet brush | 2512610 |
| TNT filter | 6730015 |
| Oven filter | 6730005 |
| Gangway tool | 6103058 |